

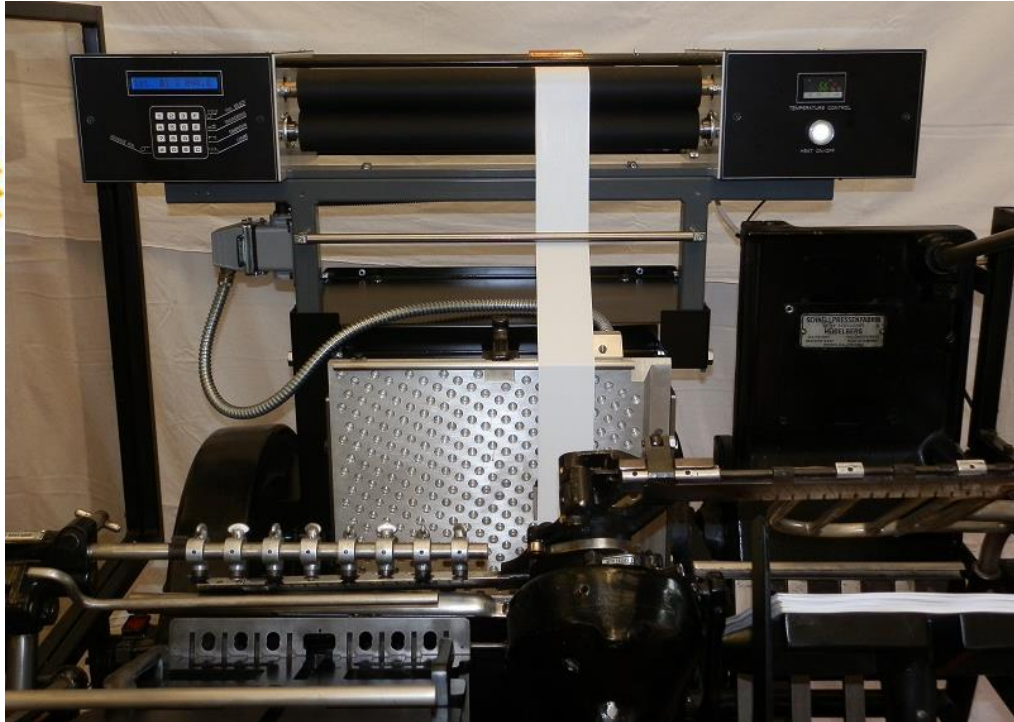


SF Services Unit 29 Maitland Road, Needham Market, Ipswich, Suffolk, UK

SF SERVICES

Tel: +44(0)1473 725161 Fax: +44(0)1473 271601
www.sfservices.com Email: info@sfservices.com

Heidelberg 10" x 15" / 26cm x 38cm **T Platen Foil Blocking Conversion**



The **Foil Expert** is simply the most innovative and simple hot foil conversions to use and fit, integrating neatly into the original press design; installation requires no drilling or screw fixings. We have designed the kit for quick and easy installation, without compromising style and quality

Our Ref: **2009d**

Key Features: 1-Year part warranty
1 new foil pull unit – (hologram registration optional extra)
1 zone low profile honeycomb heater plate (lightweight 6 kg)
Foil tension mounting system (up to 6 foil rolls)

Price: On Request

Contact us today for more details

Tel: +44(0)1473 725161 Email: info@sfservices.com





SF Services Unit 29 Maitland Road, Needham Market, Ipswich, Suffolk, UK

SF SERVICES

Tel: +44(0)1473 725161 Fax: +44(0)1473 271601
www.sfservices.com Email: info@sfservices.com

Heidelberg 10" x 15" Platen Foil Blocking Conversion – FOIL EXPERT

Foil Expert

Features:

- Quick and easy to install (self-installation)
- Substantially constructed and mounted on the top of the press
- Up to two full width rewind rollers (optional extra)
- Each foil unit features a microprocessor control
- Complex foil advance program to cope with demanding foil layouts
- Hologram registration available (optional extra)
- "Step-ins" even when running registered holograms

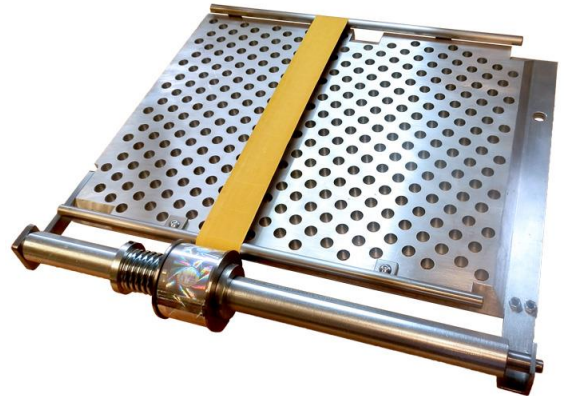


Foil system (2 Methods)

1. Using Fixed lays only will allow the use of the 1" Foil bar
2. Using fixed lays and register lays see appendix 1

Features:

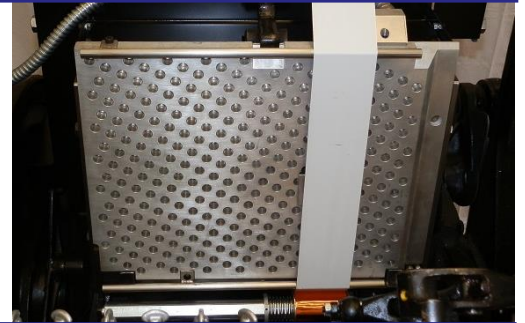
- Comprises of spring loaded bar
- Incorporates up to 6 foil rolls
- Foil diameter 60mm (122m rolls) * See appendix 1
- Controls foil tension from a full roll to the empty core
- Two guide bars supplied to ensure the foil does not touch the die
- Foil bar 1" or 25.4mm core size * See appendix 1
- Number of pulls per length up to 99



Heated bed

Features:

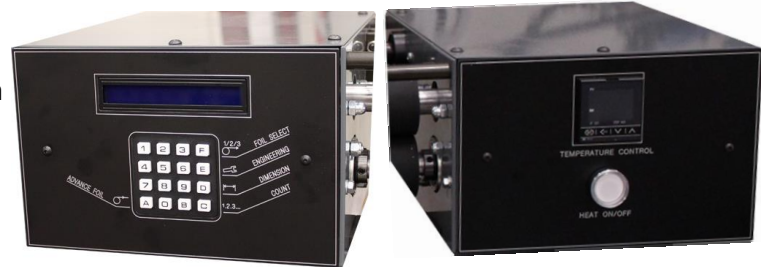
- Low profile toggle honeycomb heater plate
- Single zone temperature controlled
- Heat sensor is close to the surface of the bed so it accurately measure the temperature of the die
- Set for 6.35mm dies (can be modified for 7.0mm)
- Light weight 6.5kg



Electrical system

Features:

- Single phase 16 Amp, 3 pin plug
- Stepper motor foil pull control – pull resolution- 0.1mm
- Acceleration and deceleration for the stepper motor
- Inch foil advance
- Push button keypad (LCD)
- 110v / 220 – 240v
- Temperature control system



Contact us today for more details

Tel: +44(0)1473 725161 Email: info@sfservices.com





SF Services Unit 29 Maitland Road, Needham Market, Ipswich, Suffolk, UK

SF SERVICES

Tel: +44(0)1473 725161 Fax: +44(0)1473 271601
www.sfservices.com Email: info@sfservices.com

Heidelberg 10" x 15" Platen Foil Blocking Conversion – FOIL EXPERT

Maintenance history and documentation

The machine includes:

- Machine documentation
 - Operators manual
 - Parts Manual
 - Electrical wiring diagram



Installation, commissioning and requirements

The conversion dimensions are:

Height 290mm x width 900mm x depth 300mm - Weight 10kg

The electrical supply is: single phase 110 or 220/240v – 50Hz

SF Services can install and commission the conversion anywhere in the world using our own skilled engineers. Please ask for a price.



Warranty

This machine is offered with 1-Year parts warranty, subject to our terms and conditions, which are available on request.



Disclaimer

These details have been prepared in good faith but do not form part of any contract. It is for the purchaser to inspect the machine and satisfy themselves as to the suitability and condition of the machine prior to entering into any contract.



Contact us today for more details

Tel: +44(0)1473 725161 Email: info@sfservices.com





SF Services Unit 29 Maitland Road, Needham Market, Ipswich, Suffolk, UK

SF SERVICES

Tel: +44(0)1473 725161 Fax: +44(0)1473 271601
www.sfservices.com Email: info@sfservices.com

Heidelberg 10" x 15" Platen Foil Blocking Conversion – FOIL EXPERT

Foil Handling

Maximum foil diameter	122 meters
Foil core size	25.4mm (12mm / 16mm core optional)
Minimum distance between foil rolls	2mm
Number of foil rewinds	1 full width (2 optional)
Number of Lengths per program	5
Number of pulls per length	Up to 99
Pull Resolution	0.1mm
Hologram	(Optional)

Heating

Heat Zones	1
Temperature range	0-200 degrees centigrade
Temperature sensors	Single zone control (1)
Die Height	6.35mm / 1/4" (7mm available on request)
Bed Plate	Honeycomb Toggle Bed – Lightweight 6kg
Die fixing method	Low Profile Toggle

General

Dimensions approximate	2,080mm (L) x 1,480mm (W)
Weight (kg)	2,235kg (approx.)
Air Supply	Not required
Machine power supply	Single phase neutral and earth connections 240 VAC
	50 / 60 Hz, 3 kW
Duty Cycle	Continuously rated

Contact us today for more details

Tel: +44(0)1473 725161 Email: info@sfservices.com





SF Services Unit 29 Maitland Road, Needham Market, Ipswich, Suffolk, UK

SF SERVICES

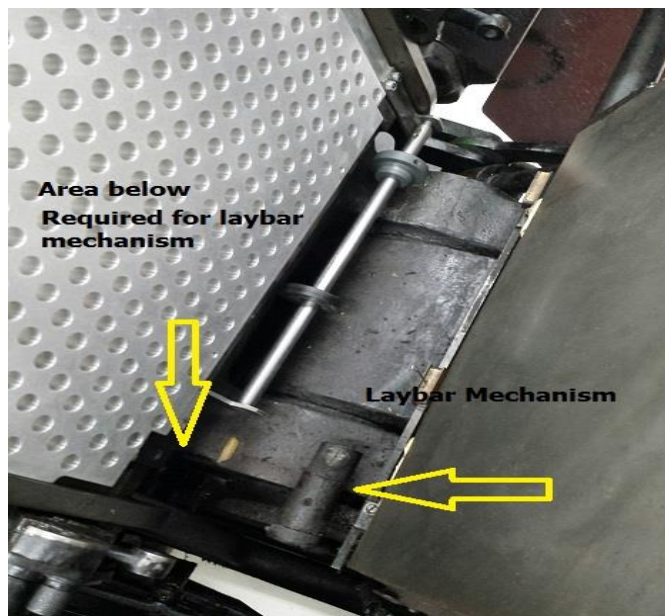
Tel: +44(0)1473 725161 Fax: +44(0)1473 271601
www.sfservices.com Email: info@sfservices.com

Appendix 1

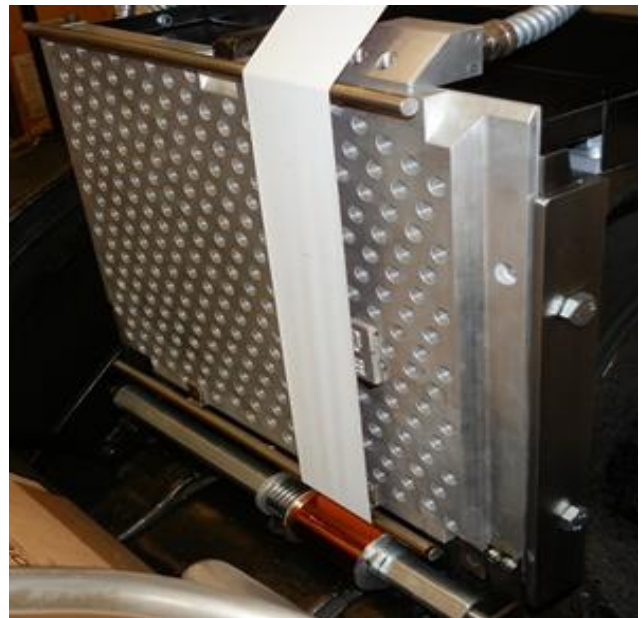
T presses have 2 register methods, 1. Fixed lays 2. Register lay bar mechanism.

Using Lay bar mechanism and fixed lays, you can only use a 12mm / 16mm foil bar with a reduced width of the heater plate, this is due to the presses lay bar mechanical linkage, shown below.

1. Using both sheet register methods
12mm foil tension bar and collars.
Lay Linkage still fitted



2. Using only fixed lay register
Full use of heater plate and
Lay bar linkage removed.



Using 16mm foil tension bar optional



Contact us today for more details

Tel: +44(0)1473 725161 Email: info@sfservices.com





SF Services Unit 29 Maitland Road, Needham Market, Ipswich, Suffolk, UK

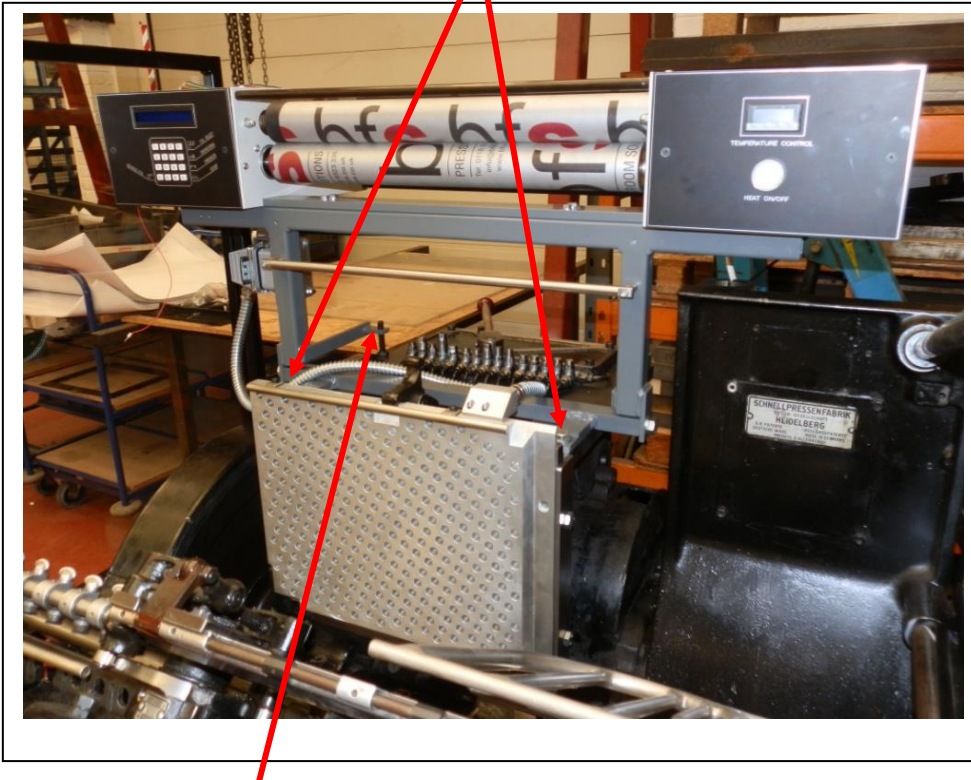
SF SERVICES

Tel: +44(0)1473 725161 Fax: +44(0)1473 271601
www.sfservices.com Email: info@sfservices.com

Heidelberg T 10x15 Basic installation instructions.

9 simple steps to install a Foil Expert

1. Install Foil Expert mounting frame
 2. Place Foil Expert on mounting bracket secure both sides
 3. Square / level Foil Expert using rear adjusting screws.
 4. Tighten Foil Expert side bolts.
 5. Place heater plate in position using original points
 6. Secure heater plate side strips using original bolt holes
 7. Plug heater plate supply lead plug into Foil Expert socket
 8. Plug in foil expert to standard 240/220 or 110 volt socket
 9. Switch on Unit – Very simple to install
 10. Certain top guards will require slightly modifying to secure back on top.
 11. Fit Pull-through sensor to provide a signal to Foil Expert each machine revolution.
 12. Full instructions will accompany the Foil Expert.
 - a. Installation manual
 - b. Electrical wiring manual
 - c. Operations manual
- 1. Foil Expert mounting points (2 x Heidelberg Original fixing points)**



FOIL EXPERT Level adjusting screws

Contact us today for more details

Tel: +44(0)1473 725161 Email: info@sfservices.com





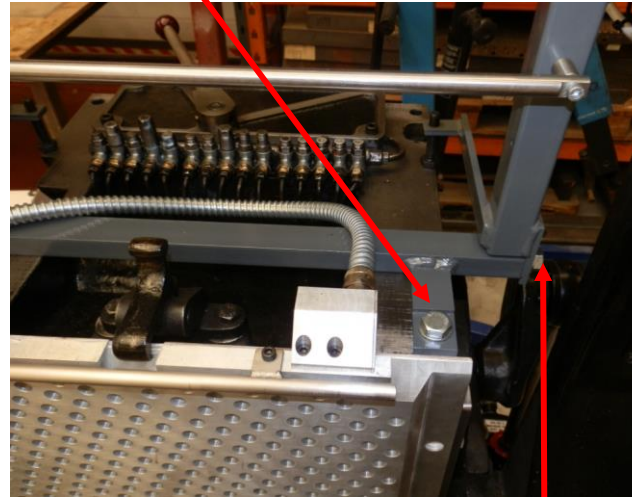
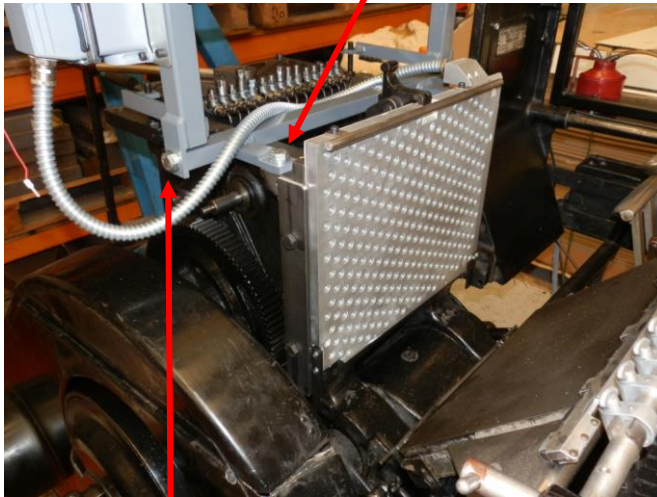
SF Services Unit 29 Maitland Road, Needham Market, Ipswich, Suffolk, UK

SF SERVICES

Tel: +44(0)1473 725161 Fax: +44(0)1473 271601
www.sfservices.com Email: info@sfservices.com

Left side mounting frame securing point

Right side mounting frame securing point



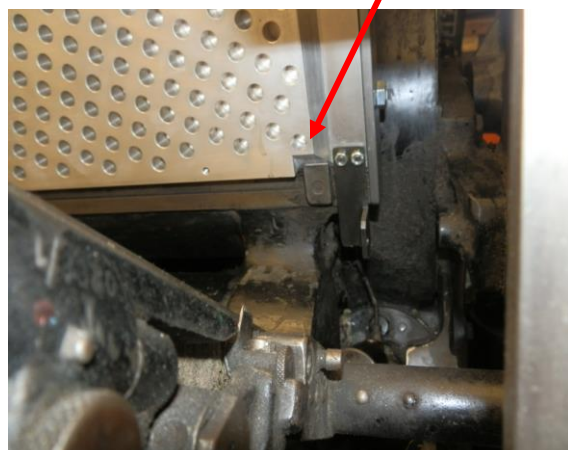
Foil Expert Left side mounting bracket securing point

Foil Expert Right side mounting bracket securing point

HEATER PLATE MOUNTING USES ALL ORIGINAL LOCATION POINTS

Heater plate left bottom securing point

Heater plate right bottom securing point



Contact us today for more details

Tel: +44(0)1473 725161 Email: info@sfservices.com





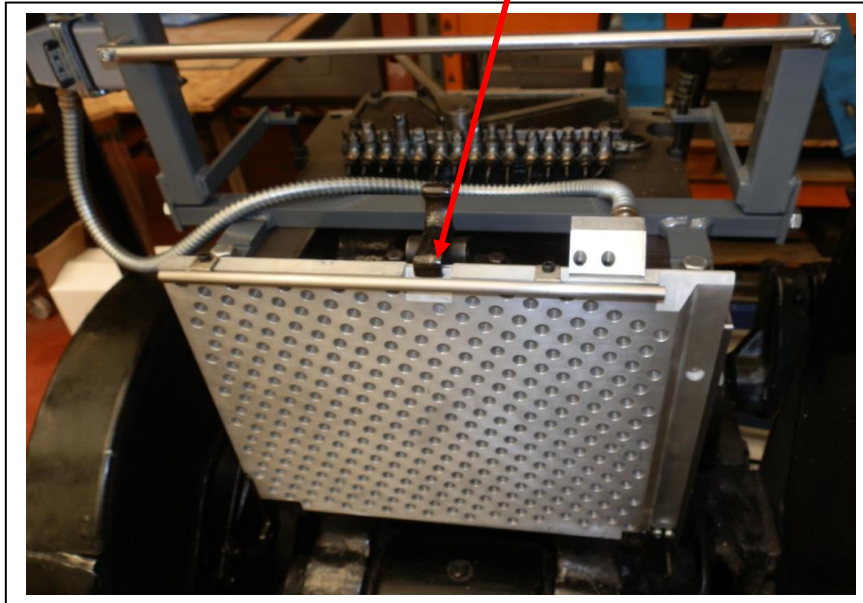
SF Services Unit 29 Maitland Road, Needham Market, Ipswich, Suffolk, UK

SF SERVICES

Tel: +44(0)1473 725161 Fax: +44(0)1473 271601
www.sfservices.com Email: info@sfservices.com

HEATER PLATE MOUNTING USES ALL ORIGINAL LOCATION POINTS

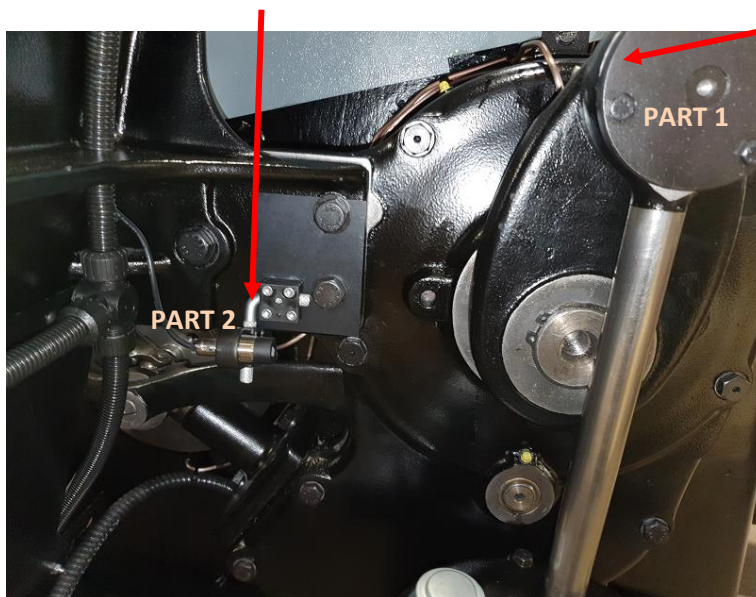
Top location clamp



Fit Sensor at pump location using original Heidelberg drillings.

*Bracket with sensor fitted is secured in position using the pump drive housing.

*When the pump rotates part 1. Passes the sensor Part 2 and activates the Foil Expert each time. PUMP ARM



Contact us today for more details

Tel: +44(0)1473 725161 Email: info@sfservices.com





SF Services Unit 29 Maitland Road, Needham Market, Ipswich, Suffolk, UK

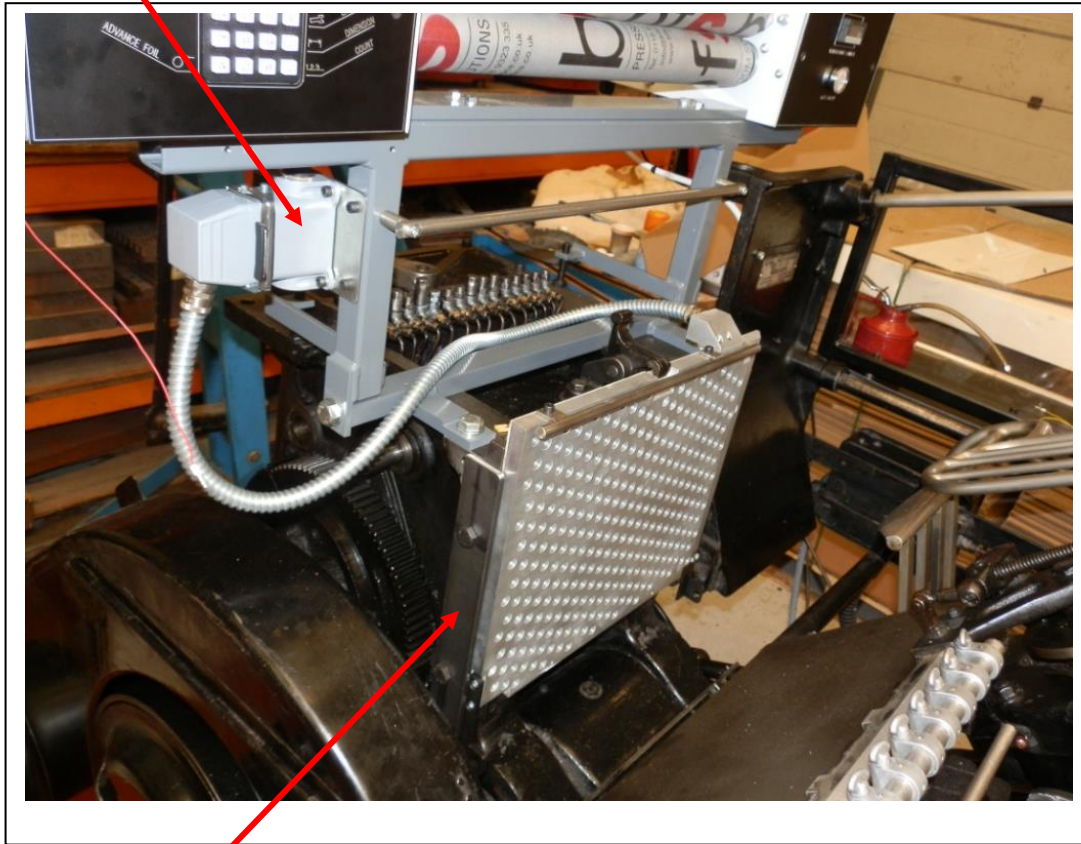
SF SERVICES

Tel: +44(0)1473 725161 Fax: +44(0)1473 271601
www.sfservices.com Email: info@sfservices.com

Other features:

Heater plate plug & socket to allow removal of Heater plate to =

Set up dies or insert Cutting Chase for cutting & Creasing



Heater plate side locating plates (Using original Heidelberg fixing holes)

Contact us today for more details

Tel: +44(0)1473 725161 Email: info@sfservices.com

